



FOUNDATION

Non-Profit Organisation
Registration No. 154-160

Presentation by
Wendy Maduwa

Programmes

UMSUKA Programme



- Cradle Ambassadors Course
- Schools Educational Outreach
- Community Engagement

Alien Plant Eradication Programme



- Job Creation
- Skills Development
- Environmental Awareness and Education



UMSUKA Programme

- ❖ 'UMSUKA' is a palaeoanthropology awareness programme that seeks to enlighten individuals about the historical journey of human evolution by showcasing fossils, artifacts and scientific findings, fostering a deeper appreciation for our species' origins.
- ❖ 'UMSUKA' means beginning, root, origin, the place in which we move forward.



Cradle Ambassadors
Course



Schools Educational
Outreach Program



Community
Engagement

Cradle Ambassadors Course

- ❖ The Umsuka *Cradle Ambassadors Course* is aimed at equipping employees within the hospitality sector in the Cradle of Humankind with knowledge about human evolutionary concepts. By providing hospitality professionals with insights into the region's rich palaeoanthropological history, they can effectively communicate its significance to guests and create a holistic experience for visitors.
- ❖ This awareness equips employees to offer more informed narratives about the site's historical importance, enabling them to create memorable and educational interactions for visitors. Additionally, understanding the deep connection between human evolution and the Cradle's natural surroundings empowers hospitality staff to promote responsible tourism and sustainable practices, aligning with the site's heritage preservation efforts.

Cradle Ambassadors Course

Pottery in The Cradle

- ❖ The Cradle Ambassadors Course uses various techniques to engage with hospitality staff to shed light on human evolution, *'Pottery in The Cradle'* was one way to educate staff on the role of stone tools.
- ❖ By integrating stone tools into the creation of pottery, we honour the ingenuity and resourcefulness of our early ancestors who utilized these very tools to shape their world.
- ❖ This connection evokes a sense of continuity, reminding us that our present-day creativity and craftsmanship are deeply rooted in the ancestral practices that shaped human culture and propelled our species forward.



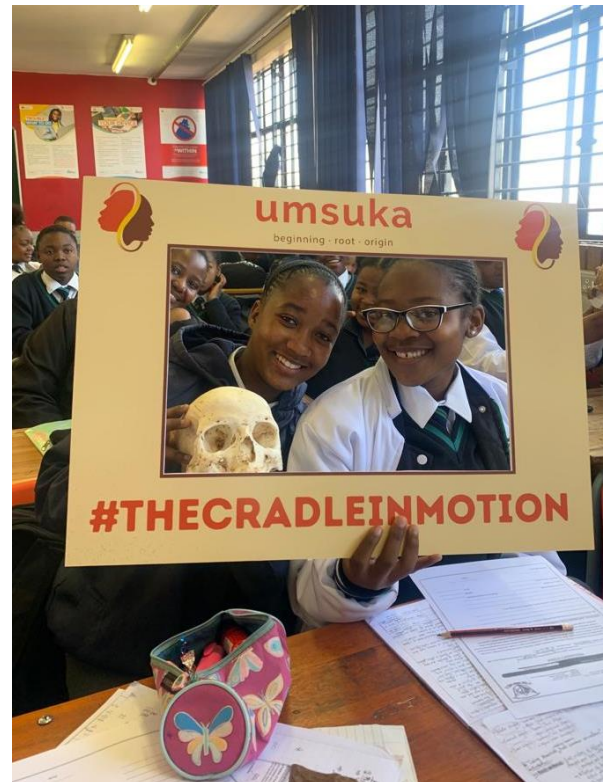
School Educational Outreach

- ❖ Raising awareness about human evolution among high school learners is an exciting opportunity to spark curiosity and cultivate a deeper understanding of our shared origins. By introducing students to the fascinating journey of our species through time, we can inspire a sense of wonder and discovery about the complex processes that shaped us.
- ❖ Exploring topics such as fossil evidence, genetic adaptations, and the interplay between environment and evolution, students can gain insights into the dynamic story of humanity's development. This knowledge not only fosters critical thinking and scientific inquiry but also encourages respect for diversity and the interconnectedness of life on Earth.
- ❖ By nurturing an appreciation for the scientific method and the ongoing quest for knowledge, we empower young learners to engage with the complexities of human evolution and contribute to a more informed and compassionate global community.

School Educational Outreach

The Cradle in Motion

- ❖ *'The Cradle in Motion'* is a dynamic educational concept aimed at making human evolutionary concepts accessible to learners.
- ❖ This innovative approach involves bringing the Cradle of Humankind's palaeoanthropological wonders directly into the classroom, transcending geographical and economic barriers.
- ❖ Through immersive virtual tours, interactive workshops, and hands-on activities, students are transported to the heart of the Cradle's historical significance, despite physical limitations.



The Cradle in Motion Schools Engaged



AB
Phkompe
Secondary
School

Boipelo
Secondary

Thathulwazi
Secondary
St Ansgars High
School

Schaumberg
Combined School

Matla
Combined
School

Winifred
Nomzamo
Mandela
School

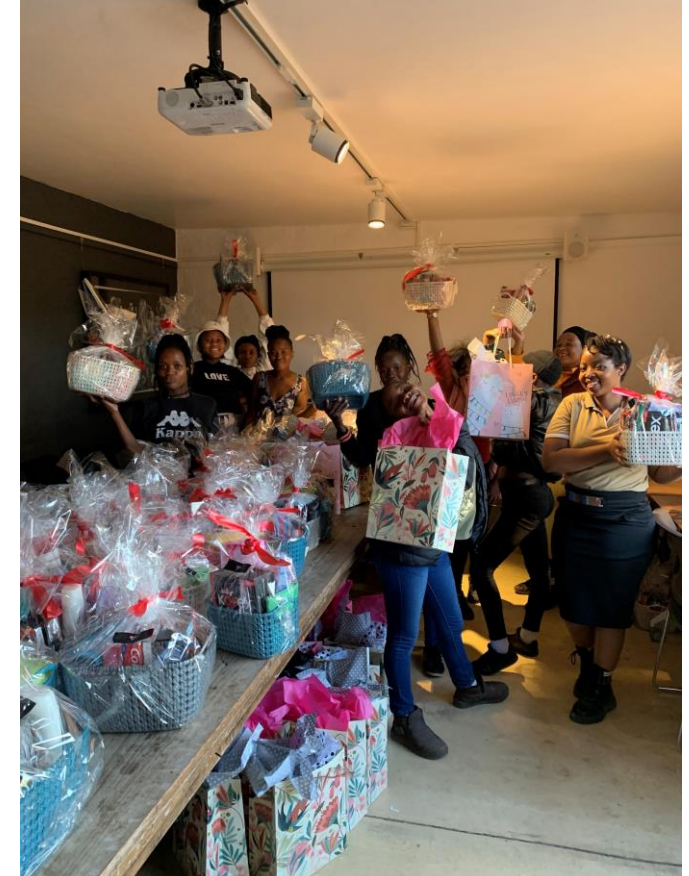
Magalies
State School

Letsatsing
Combined
School

SG Mafaesa Secondary
School
Madiba Comprehensive
School

Recognizing our privilege through community engagement

- ❖ Community engagement initiatives hold profound importance as they create a platform for organizations to actively contribute to the well-being of the community of the Cradle of Humankind.
- ❖ Supporting initiatives focused on education, environmental conservation, community development, and cultural enrichment, allows for a symbiotic relationship between corporate entities and the local community.



Community Engagement



Impacting Change in The Cradle



Enriching minds with Miss SA



MISS SA Ndavi Nokeri with Wendy Maduwa and learners from St Ansgars High School. | Indirect Media

INSPIRATIONAL

Miss SA brushes up on human origins

ANITA NKONKI
anita.nkonki@inl.co.za

MISS South Africa 2022 Ndavi Nokeri went back to school for a lesson in palaeoanthropology and alien invasive plant (AIP) species when she visited the Malapa Motsetse Foundation's Explorer Centre this week.

Nokeri was the inspirational guest speaker at a teaching and learning event for learners who attend St Ansgar's High School, located close to the reserve.

The beauty queen and the learners were introduced to Umsuka, a public palaeoanthropology programme aimed at increasing the accessibility of common fossil hominin heritage for South Africans of diverse backgrounds.

The programme creates insightful educational experiences by exposing them to fossil sites, the uniquely curated Malapa Museum as well as the science behind palaeoanthropology.

To date, 10 schools and 500 learners, predominantly from disadvantaged communities, visit the site each quarter.

Wendy Maduwa, GCNR's AIP and Umsuka programme manager, explained: "Our aim is to engage a wide audience with the past in ways that unite us in the present and help us work towards a better-shared future."

With regard to AIPs, Maduwa said they posed a threat to the ecosystem as they compete with indigenous species in a habitat. "They also have a detrimental impact on water security (they deplete surface water run-off and groundwater recharge) as well as the ecological functioning of natural systems and the efficient agricultural use of land. They cause soil erosion and amplify the effects of fires and floods."

Education in all its forms is close to Nokeri's heart and she has devoted her Miss South Africa reign to redressing the imbalances in education through her

advocacy campaign, Ed-Unite, which will be launched this week.

"There needs to be a level playing field for everyone – rich or poor, urban or rural – when it comes to education. As Nelson Mandela said, 'Education is the most powerful weapon you can use to change the world.' Through Ed-Unite, I am working as the link between big business and schools and learners, matching funding with need."

Nokeri and Maduwa discovered that they are both University of Pretoria alumni and the first people in their immediate families to gain a university degree, agreeing that education has changed the course of their lives.

Nokeri, who hails from Tzaneen in Limpopo, is set to jet off to New Orleans in the US in January next year to represent South Africa at the Miss Universe finale and will take with her a message reinforcing the importance of equal education.



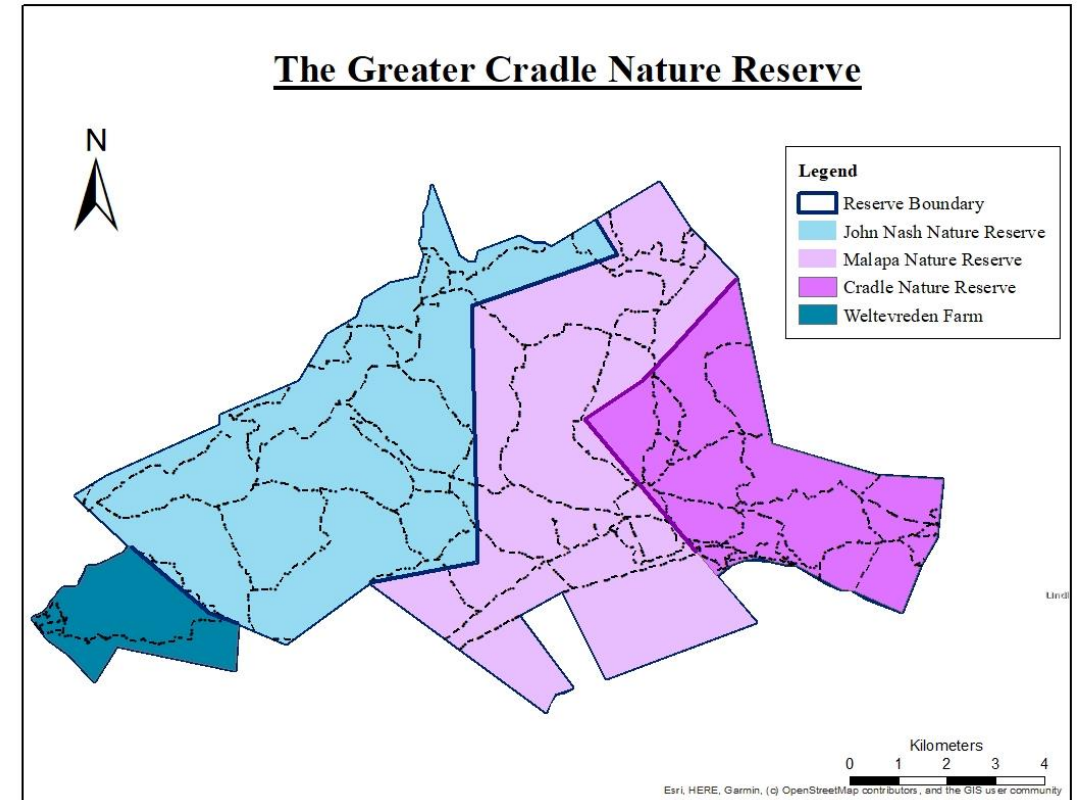
Alien Invasive Plant Programme

- ❖ Alien invasive plant (AIP) species are species that pose a threat to an ecosystem, they are species that are introduced into a host country and out-compete with the indigenous species.
- ❖ AIP's have a detrimental impact on water security (they deplete surface water runoff and groundwater recharge), the ecological functioning of natural systems, and the efficient agricultural use of land. They cause soil erosion and amplify the effects of fires and floods.



Encroachment of Alien Invasive Plant Species

- The Alien Invasive Plant Programme is a targeted effort dedicated to combatting the proliferation of alien invasive plant species in The Greater Cradle Nature Reserve.
- With a deep understanding of the potential threats posed by invasive plants, the programme focuses on preserving the rich biodiversity and cultural heritage of the Cradle of Humankind by utilizing scientific research, strategic management practices, and collaboration with local communities.
- A highly skilled team works diligently to map the distribution patterns of these plants, implement effective eradication methods, and restore indigenous habitats.

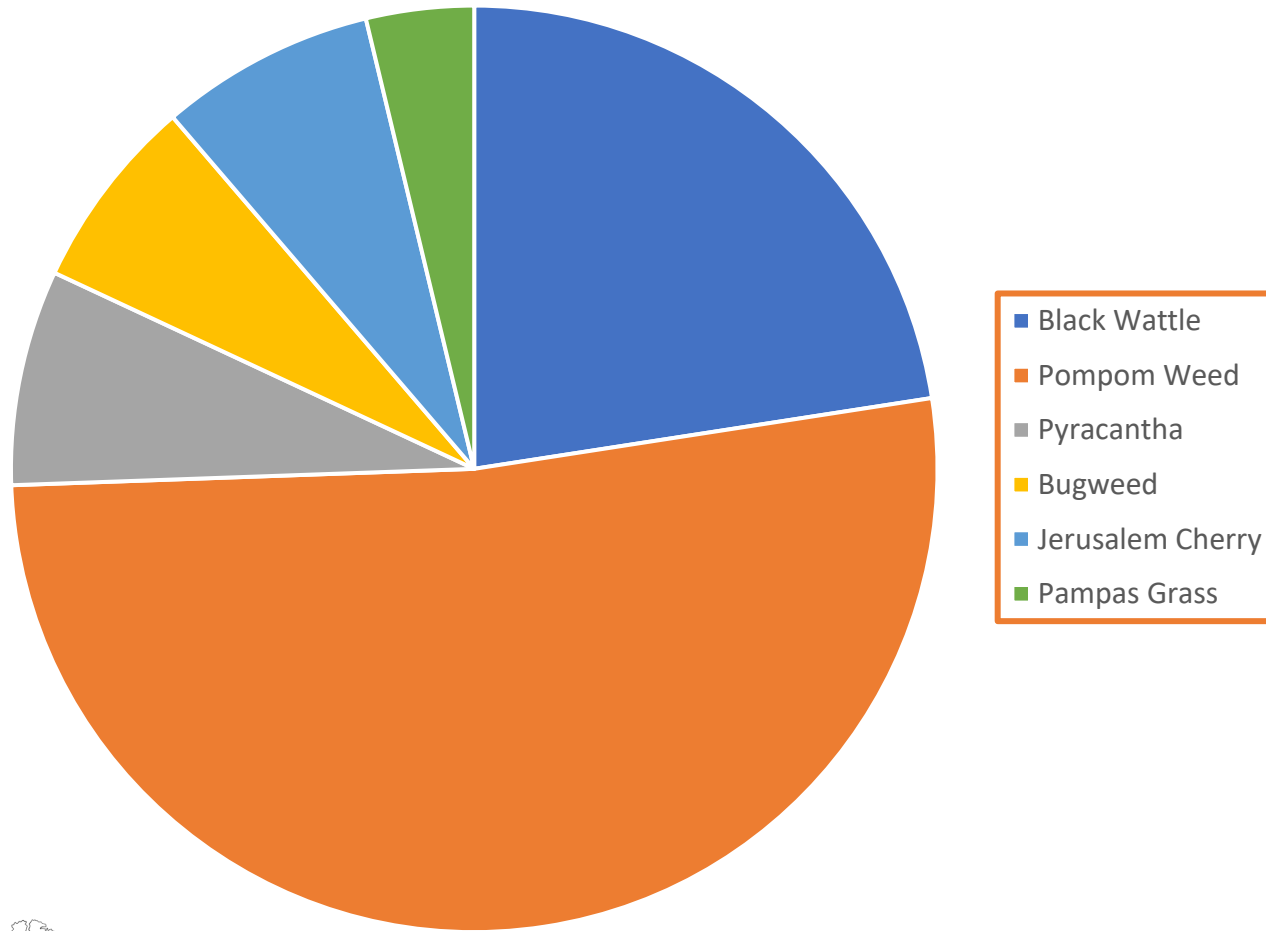


Meet The Alien Invasive Plant Program Team

- **Wendy Maduwa** – AIP Program Manager
- **Tshediso Lesodi** – Team Leader & Chainsaw Operator
- **Lifa Sikhosana** – Brushcutter Operator
- **Given Komane** – Brushcutter Operator & Herbicide Applicator
- **Lucky Molali** – Chainsaw Operator



Cleared Alien Invasive Plant Species



Black Wattle Eradication



The 'Black Wattle' Production Hub

❖ Over 50 000 Black Wattle trees have been eradicated on The Greater Cradle Nature Reserve and cleared material has been reused for multiple initiatives.

Firewood

- Cleared Black Wattle is chopped into small batches for firewood, firewood that is supplied to the Cradle Boutique Hotel and Riverhorse Lodge.

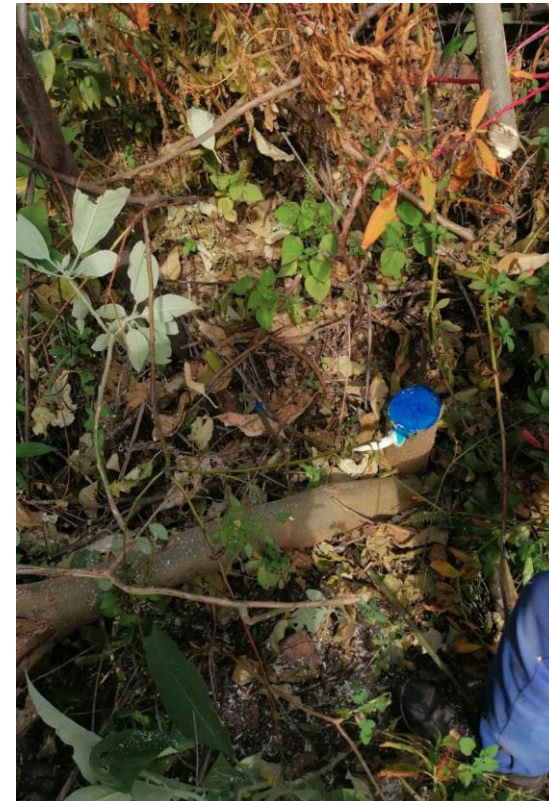
Compost

- Wood chips from the black wattle are used for the farms compost heap and cattle feed.

Charcoal

- Excess black wattle bark gets processed into charcoal

Bugweed Eradication



PomPom Weed Eradication: Biological control

- ❖ Biological eradication of the pompom weed refers to a method of controlling or eliminating the invasive plant species through the introduction of natural enemies, typically insects or pathogens, that specifically target and feed on the weed.
- ❖ The introduced organisms, often referred to as biocontrol agents, help to suppress the growth and reproduction of pompom weed, ultimately leading to a reduction in its impact on the local ecosystem.



PomPom Eradication: Physical control



PomPom Eradication: Chemical control



Weeding out poverty in the Cradle community

- The programmes align with our commitment to conservation, education and job creation through the promotion of conservation workshops, entrepreneurial skills and generation of income in our surrounding communities.
- All proceeds and profits generated go towards the conservation and protection of the cultural, palaeoanthropological and natural heritage of the Cradle of Humankind World Heritage Site.



Brand Collaboration



Sunday Times



basic education
Department:
Basic Education
REPUBLIC OF SOUTH AFRICA



The Star

**NIROX
FOUNDATION**

Ed
Unite
By Ndavi Nokeri





THE

Malapa Motsetse

FOUNDATION

Non-Profit Organisation

Registration No. 154-160

Thank you